

# ActiveADAPTER Installation and Configuration Guide

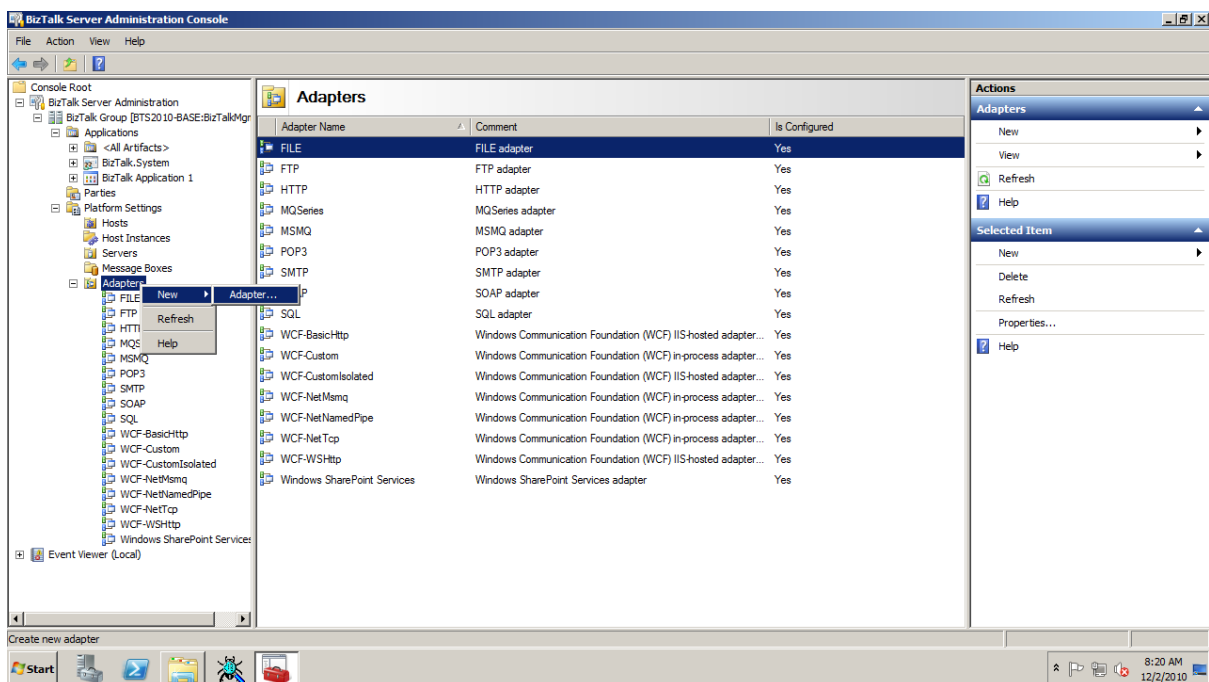
ActiveADAPTER: The Active Directory Adapter for BizTalk Server

## Installing ActiveADAPTER

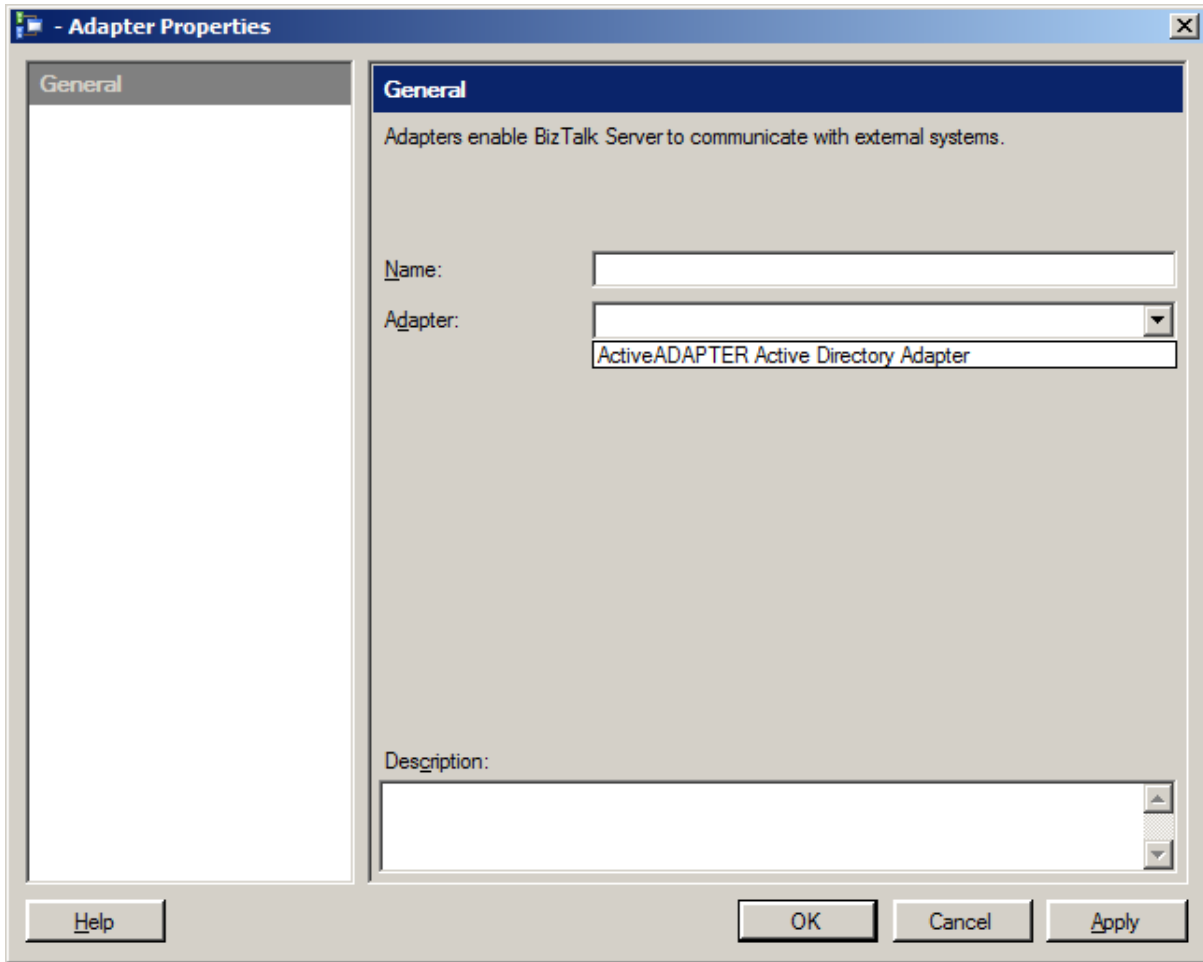
1. Log on to your BizTalk Server 2006R2, 2009 or 2010 computer with an account that has administrative rights.
2. Ensure .NET Framework 3.5 is installed on the computer. (Already there if you have Visual Studio 2008. Otherwise download it from Microsoft.)
3. Run the ActiveADAPTER installation package (ActiveADAPTER for BizTalk Server.msi).

## Adding ActiveADAPTER to the BizTalk Administration Console

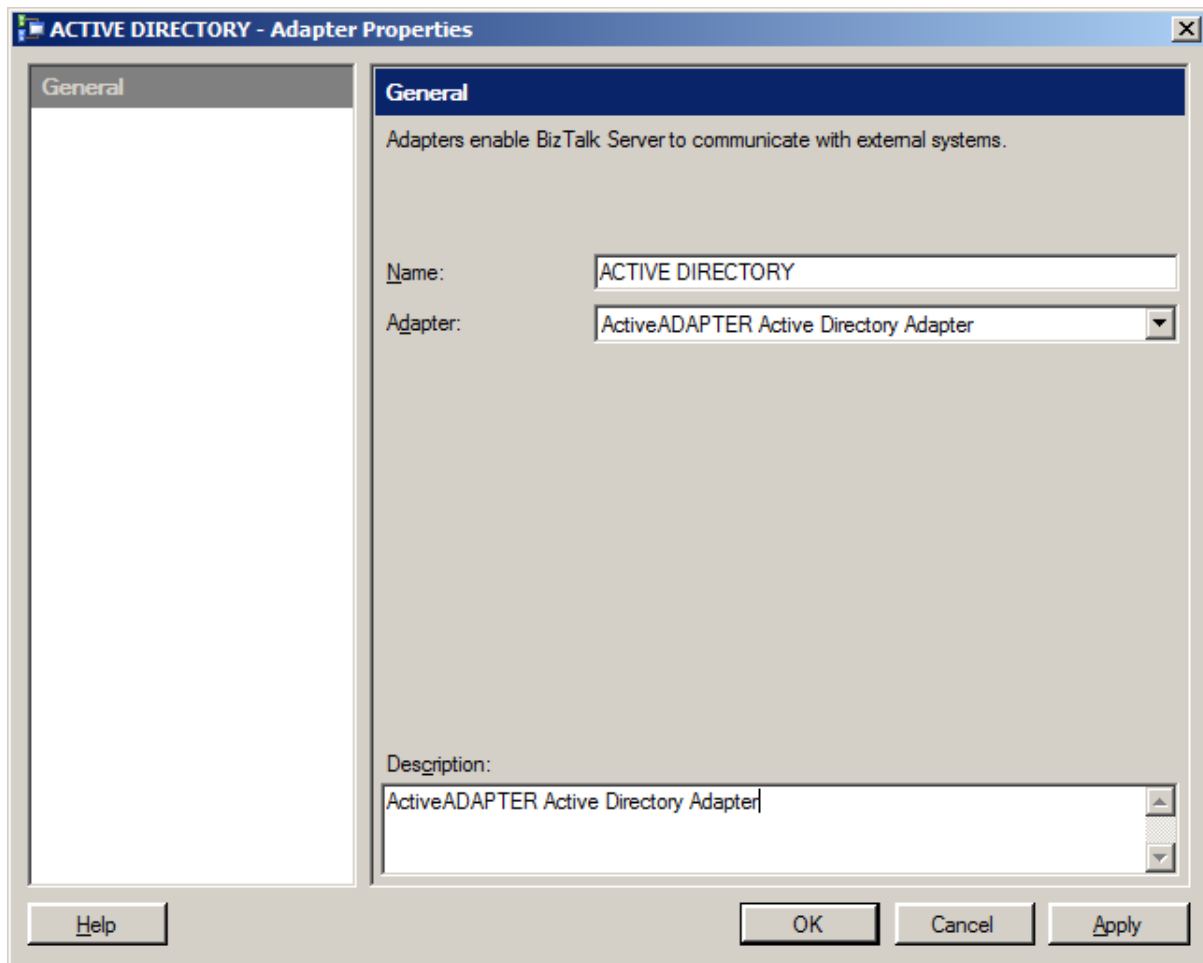
1. Open the BizTalk Administration Console. (Start > Programs > BizTalk Server > BizTalk Administration Console).
2. Expand Platform Settings.
3. Right click on Adapters and select New > Adapter... as shown below.



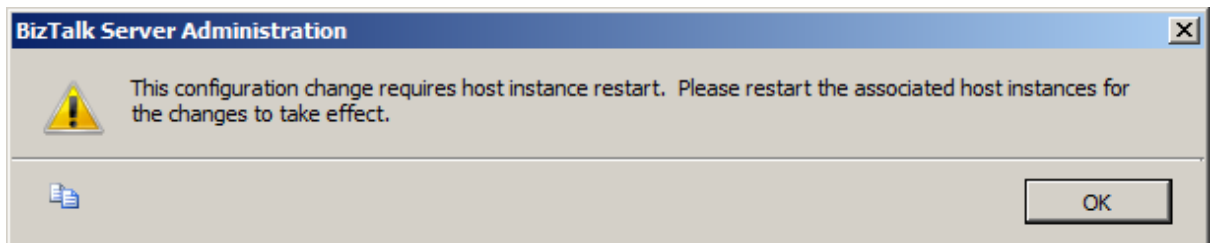
4. A properties window for the new adapter will appear. In the Adapter: drop down choose ActiveADAPTER Active Directory Adapter.



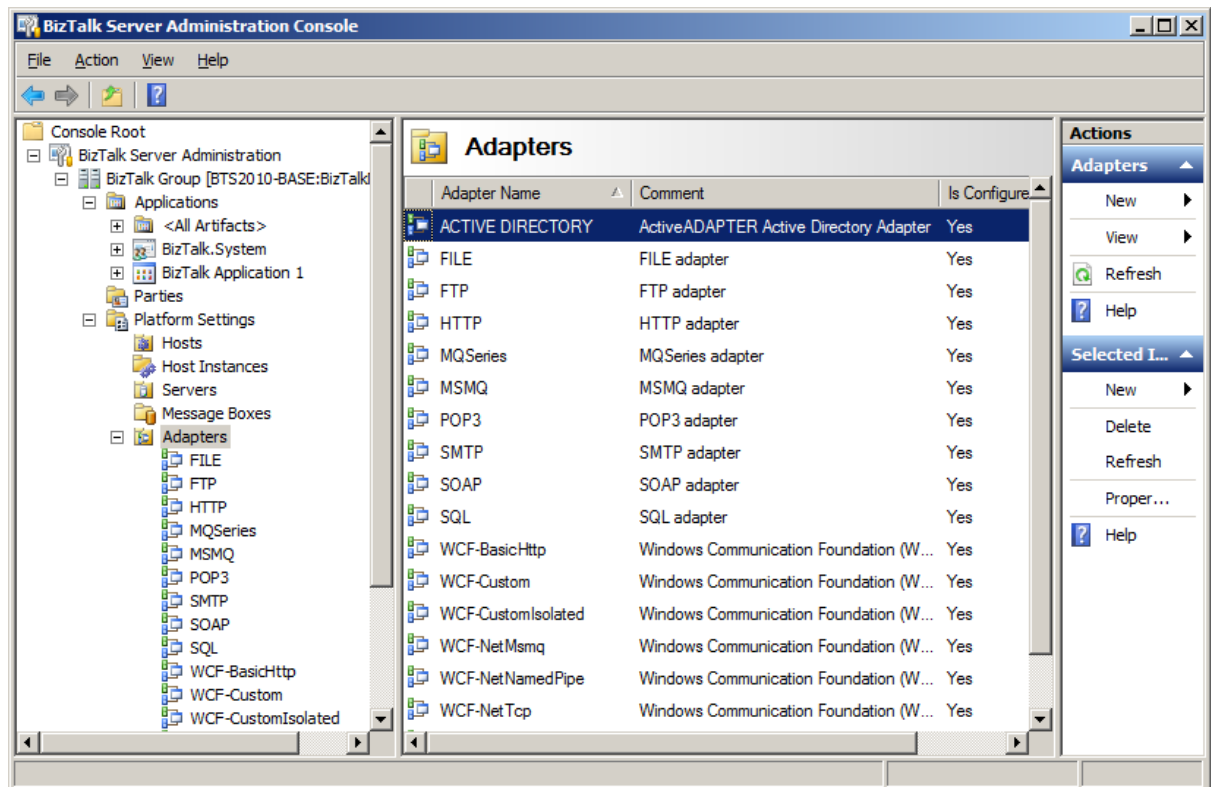
5. Enter a name and description for the adapter: "ACTIVE DIRECTORY" and "ActiveADAPTER Active Directory Adapter".



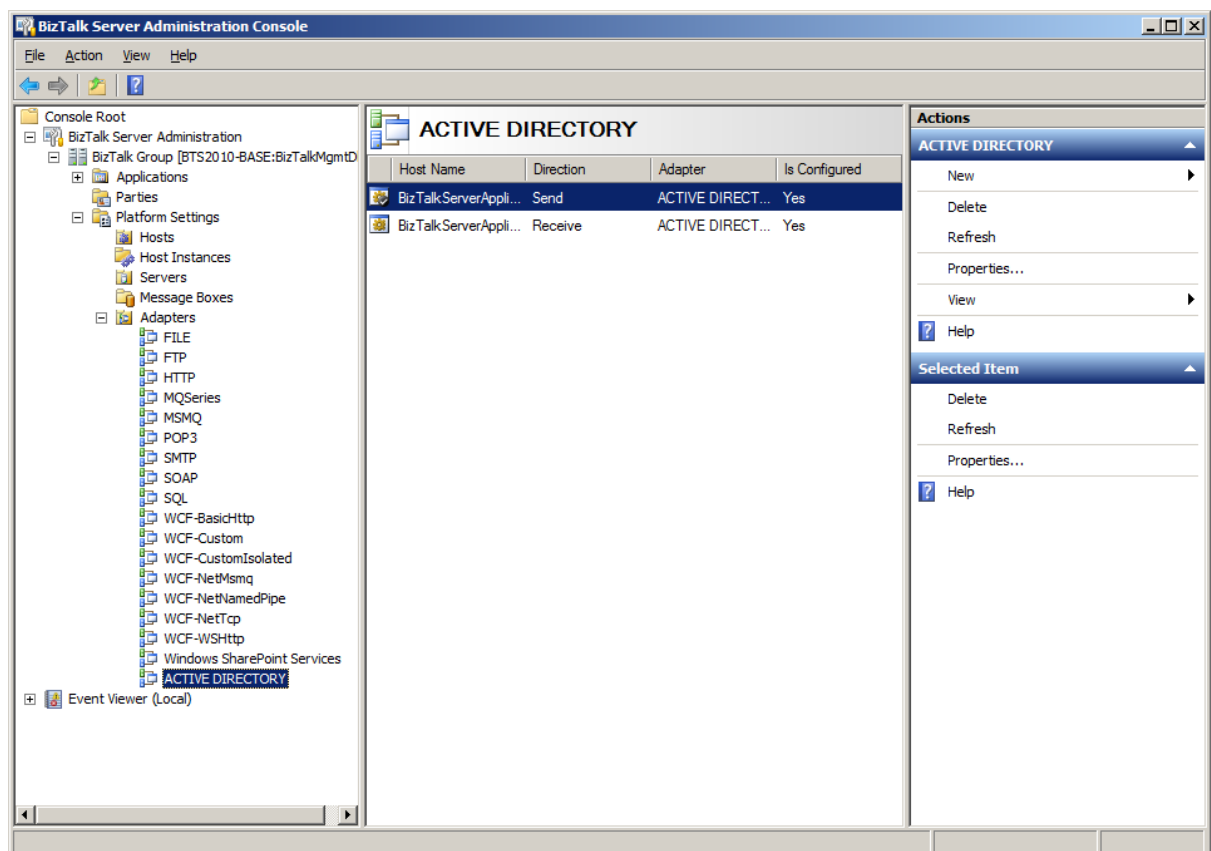
6. Click OK. A warning will appear advising you to restart your Host Instance.



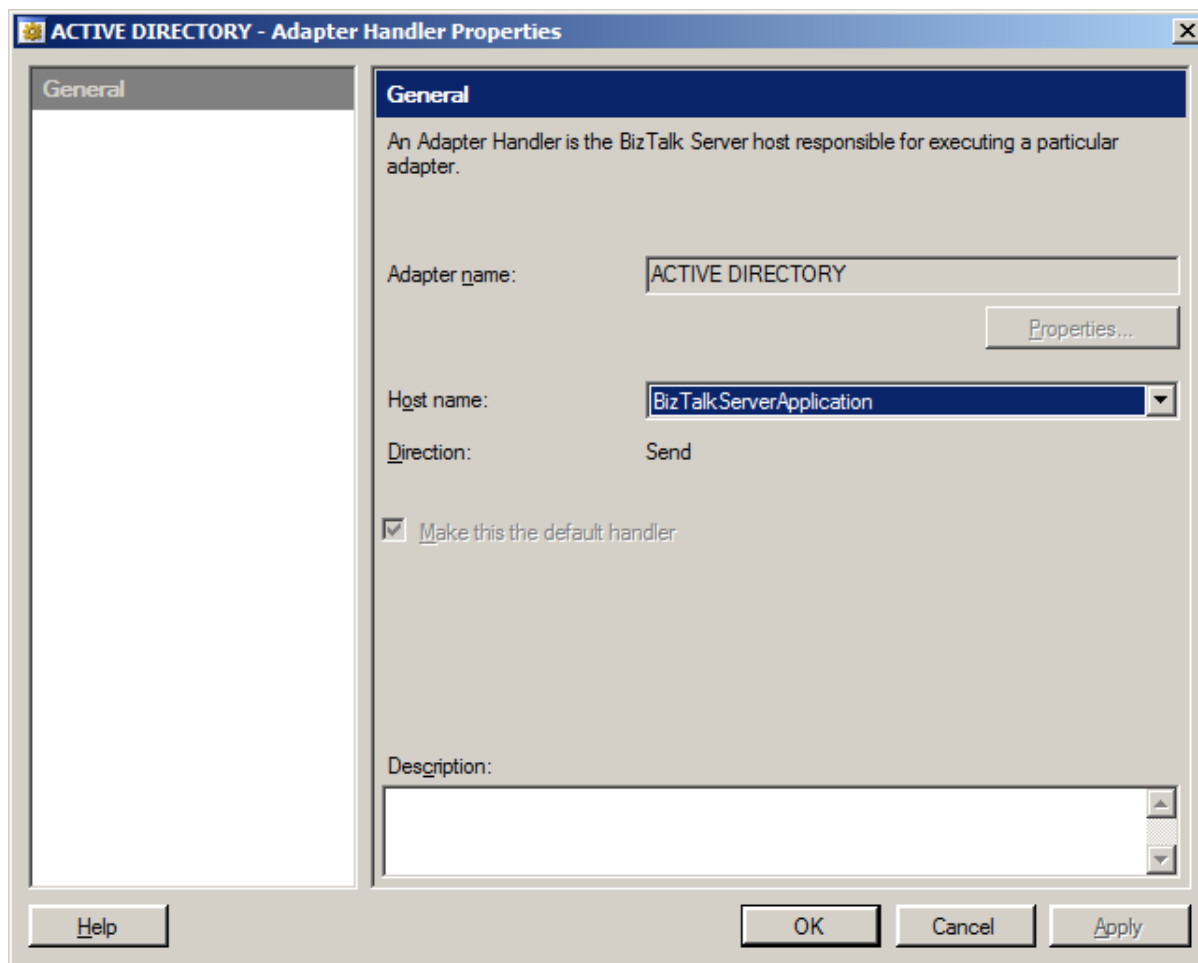
7. Click OK. You now have an entry for ACTIVE DIRECTORY in your adapters list as shown below.



- Click on the entry for your new ACTIVE DIRECTORY adapter in the left pane to bring up the Handlers for the adapter.



- Double click a Handler to view its properties and set a new Host if required.



## Planning Host Instance permissions

When planning your BizTalk applications, ensure the windows account used for the Host Instance in which your BizTalk Application runs has permission to query or update the Active Directory objects you are targeting. Consult with your Active Directory Administrator or refer to your Microsoft documentation for more information.

For development purposes you might consider making this account a member of the Domain or Enterprise Admin groups.

## Installation Complete

Now refer to the *ActiveADAPTER User Guide* to begin Active Directory development using ActiveADAPTER and Microsoft BizTalk Server.

There are shortcuts to all the ActiveADAPTER Documentation, Schemas and Samples in Start > Programs > ActiveADAPTER.

Have Fun!